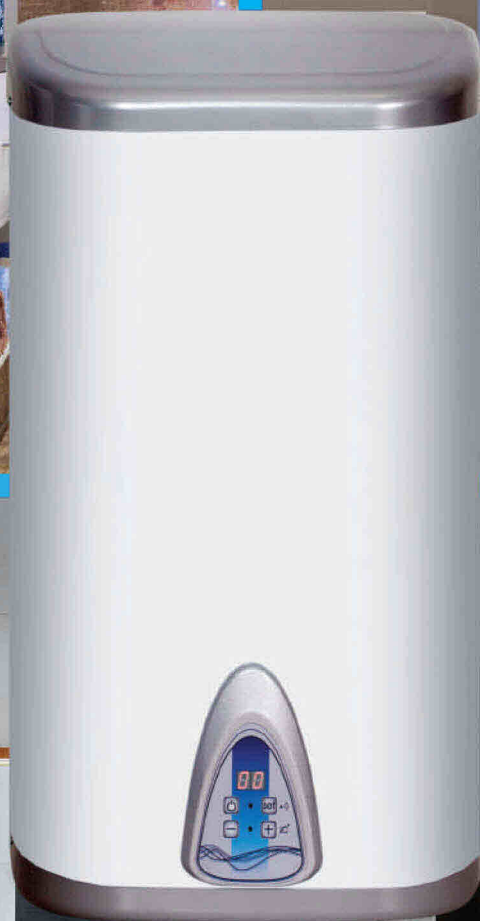


Electric water heaters



De luxe®

GUARANTEE OF THE COMPANY- Quality system ISO 9001

Quality management

Quality of operation

Quality of production

Quality of enterprise



The international certificate ISO 9001 confirms effective quality management system of the company that functions in accordance with the best world practices of controlling production quality.



SPIRIT OF INNOVATIONS

SUPERIORITY OF HIGH TECHNOLOGIES



TIG WELDING

Innovative welding technology used for welding inner tanks made of stainless steel completely preserves steel structure and makes welding seam extremely strong and resistant to corrosion.

TECHNOLOGY CLASSLINED

We are constantly improving technology of glass enameling, closing plasticity of enamel, that is nothing more than glass, to plasticity of metal. Owing to this micro cracks of enamel are excluded.

WATER HEATERS WITH HIGH ANTICORROSIVE CHARACTERISTICS



Innovative processing of the surface of a copper heating element has high anticorrosive properties. Special configuration and increased size of the anode intensify corrosion resistance, which undoubtedly provides the durability and high reliability of the heater.



**COPPER - IS A NOBLE
METAL NATURAL,
IT IS COMPLETELY
SAFE FOR HEALTH**

Copper tends to inhibit the reproduction of pathogenic bacteria. Due to the natural plasticity of copper, details of any shape can be covered with it. And remarkable properties of thermal conductivity of copper provide a good heat transfer and do not allow to deform with temperature changes. The feature of a new TEH is the absence of the coating of nickel in its composition. Nickel is known to be toxic and its compounds can cause people severe allergies. In Europe and America nickel and its compounds are prohibited in consumer products.

TAKE CARE OF YOUR HEALTH AND SAVE MONEY



BE HEALTHY IS GOOD

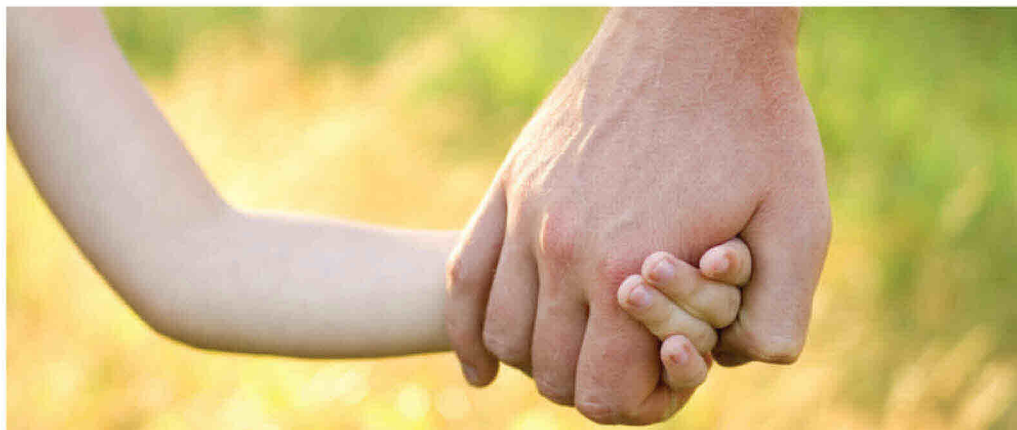
The unique method of double-layer coating of the inner surface of the tank with chemically neutral bio glass enamel prevents the development of harmful microorganisms and makes the water safe for health.



**BE HEALTHY AND
RICH IS EVEN BETTER**

The improved magnesium anode performs the additional anti-corrosion function of protecting the tank and the heating element. Magnesium that is safe for human health not only effectively prevents corrosion of the tank, but also significantly extends the service lifetime of the heating element.

SAFETY ABOVE EVERYTHING



**MULTI-LEVEL ABSOLUTE SECURITY
SYSTEM PROVIDES ABSOLUTE PROTECTION,
PROTECTING BOTH YOU AND THE HEATER.
TWO-LEVEL PROTECTION WHEN
THE TEMPERATURE RISES
TO AN UNACCEPTABLE VALUE, INCLUDES:**

- the thermoregulator without the possibility of self-activation and additional contact thermal switch that guarantees emergency shutdown of a water heater in case of failure of the thermoregulator at overheating;
- protection from leaks and excessive pressure inside the tank due to reverse pressure relief valve which ensures the discharge of the excess pressure in a water heater;
- the protection class of electrical components from dust and water IP24 shows waterproofing qualities and protection of a water heater from dust and moisture.

NEW LEVEL OF COMFORT



AESTHETIC WATER HEATER —

The elegant design is developed to meet the increasing requirements for water heating equipment aesthetics and opens up new dimensions of comfort, allowing you to match the modern interior and providing the user with a higher level of quality assurance.

HOT WATER EASY AND SIMPLE!

- Almost every person may easily control the water heater, which is achieved by the simplicity and accessibility of main control elements. The temperature controller of the heater is located on its front panel.

ALL INCLUSIVE!

- All water heaters are fully equipped with anchor bolts for mounting and also with safety valve, dialectical adapter, plug and power cable.



FEATURES



One-touch control



Anticorrosive magnesium anode



Light indication of activation and heating



Automatic temperature control system



Layer of insulation that significantly reduces heat and energy loss



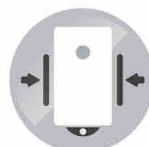
Protection class of electrical components from dust and water



Absolute security system



Optimal operation pressure



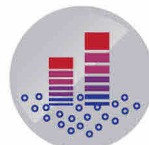
Compact flat shape



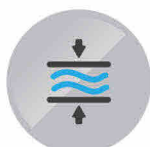
Complete set



Power consumption regulation



Full/half power mode Quick heating



Protection from overpressure



«Antifreeze» function or protection from freezing



Antibacterial self-cleaning



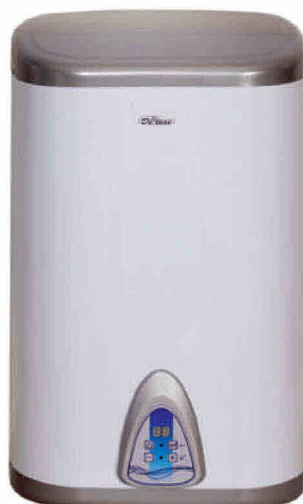
SERIES CLASSIC & CLASSIC PLUS

CLASSICS –THE MERITS OF WHICH ARE NOT SUPPOSED TO DOUBT

- Automatic temperature control system
- Light indication of activation and heating
- Absolute security system SPS security
- Anticorrosive magnesium anode
- Safety valve
- Layer of insulation that significantly reduces heat and energy loss
- Internal tank enameled with antibacterial glass enamel
- Internal or external water temperature control*

MODEL		W50V	W80V	W100V	W120V
VOLUME		W50V1	W80V1	W100V1	W120V1
		50 l	80 l	100 l	120 l
Heating time					
Δ t=45°C, no more					
Power					
		1,5 kW	1,5 kW	1,5 kW	1,5 kW
Dimensions	Height	556 mm	786 mm	916 mm	1062 mm
	Diameter	430 mm	430 mm	430 mm	430 mm
Packing	Width	476 mm	476 mm	476 mm	476 mm
	Depth	476 mm	476 mm	476 mm	476 mm
	Height	592 mm	802 mm	932 mm	1098 mm

* If there is external regulation, the figure 1 is indicated in the model name.



SERIES ELSTEP

**SERIES OF WATER HEATERS OF AN ORIGINAL RECTANGULAR SHAPE
WITH AN ENAMELED TANK AND ELECTRONIC CONTROL**

- Automatic temperature control system
- Light indication of activation and heating temperature
- Absolute security system SPS security
- Anticorrosive magnesium anode
- Safety valve
- Layer of insulation that significantly reduces heat and energy loss
- Internal tank enameled with antibacterial glass enamel
- Antibacterial self-cleaning
- «Antifreeze» function or protection from freezing

MODEL VOLUME		5W50V2 50 l	5W60V2 60 l
Heating time $\Delta t=45^{\circ}\text{C}$, no more		2,0h	2,5h
Power		1,5 kW	1,5 kW
Dimensions	Width	440 mm	440 mm
	Depth	372 mm	372 mm
	Height	731 mm	850 mm
Packing	Width	492 mm	492 mm
	Depth	433 mm	433 mm
	Height	744 mm	893 mm



SERIES TOP LIKE

SERIES OF WATER HEATERS OF A FLAT SHAPE WITH A STAINLESS STEEL TANK AND MECHANICAL CONTROL

- Compact flat shape
- Light indication of activation and heating
- Automatic temperature control system
- Very simple system of the external thermoregulator control
- Internal tank made of high quality stainless steel
- Independent operation of TEHs
- Storage basin consisting of two tanks with special system of overflow
- Absolute security system SPS security
- Anticorrosive magnesium anode
- Quick water heating for the first shower
- Power consumption regulation
- Safety valve
- Layer of insulation that significantly reduces heat and energy loss

MODEL VOLUME		7W30Vs1 30 l	7W40Vs1 40 l	7W50Vs1 50 l
Heating time $\Delta t=45^{\circ}\text{C}$, no more		1,4 h	1,6 h	2,0 h
Power		1,0/2,0 kW	1,0/2,0 kW	1,0/2,0 kW
Dimensions	Width	435 mm	435 mm	435 mm
	Depth	252 mm	252 mm	252 mm
	Height	628 mm	792 mm	954 mm
Packing	Width	477 mm	477 mm	477 mm
	Depth	310 mm	310 mm	310 mm
	Height	677 mm	847 mm	1009 mm



SERIES ELCLASSIC

SERIES OF WATER HEATERS OF A ROUND SHAPE WITH AN ENAMELED TANK AND ELECTRONIC CONTROL

- Automatic temperature control system
- Light indication of activation and heating temperature
- Absolute security system SPS security
- Anticorrosive magnesium anode
- Safety valve
- Layer of insulation that significantly reduces heat and energy loss
- Internal tank enameled with antibacterial glass enamel
- Antibacterial self-cleaning
- «Antifreeze» function or protection from freezing

MODEL		W50V2	W80V2	W100V2
VOLUME		50 l	80 l	100 l
Heating time Δ t=45°C, no more		2,0h	2,7h	3,5 h
Power		1,5 kW	1,5 kW	1,5 kW
Dimensions	Height	556 mm	786 mm	916 mm
	Diameter	430 mm	430 mm	430 mm
Packing	Width	476 mm	476 mm	476 mm
	Depth	476 mm	476 mm	476 mm
	Height	592 mm	802 mm	932 mm

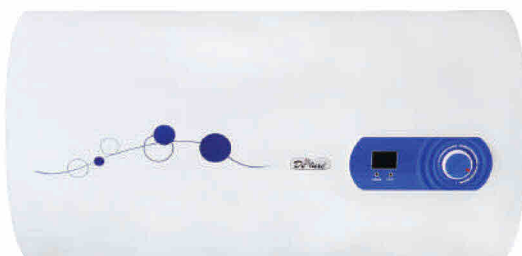


SERIES ELPREMIER

SERIES OF WATER HEATERS OF A ROUND SHAPE WITH AN ENAMELED TANK AND ELECTRONIC CONTROL

- Automatic temperature control system
- Light indication of activation and heating temperature
- Absolute security system SPS security
- Anticorrosive magnesium anode
- Safety valve
- Layer of insulation that significantly reduces heat and energy loss
- Internal tank enameled with antibacterial glass enamel
- Antibacterial self-cleaning
- «Antifreeze» function or protection from freezing

MODEL		3W50V2	3W60V2
VOLUME		50 l	60 l
Heating time Δ t=45°C, no more		2,0 h	2,5h
Power		1,5 kW	1,5 kW
Dimensions	Height	688 mm	807 mm
	Diameter	360 mm	360 mm
Packing	Width	416 mm	416 mm
	Depth	416 mm	416 mm
	Height	757 mm	876 mm

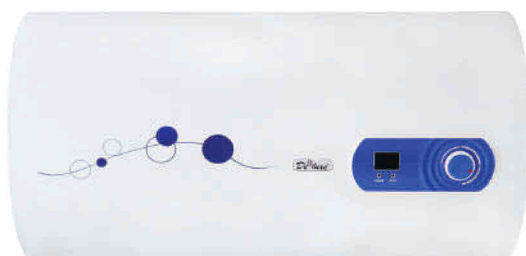


SKY PREMIER

HORIZONTAL LOCATION OF A WATER HEATER SAVES MAXIMUM SPACE

- Automatic temperature control system
- Light indication of activation and heating temperature
- Absolute security system SPS security
- Anticorrosive magnesium anode
- Layer of insulation that significantly reduces heat and energy loss
- Safety valve
- Internal tank enameled with antibacterial glass enamel
- Very simple system of external thermoregulator control

MODEL		11W60H1	11W80H1
VOLUME		60 l	80 l
Heating time ▲ t=45°C, no more		2,0h	2,7h
Power		1,5 kW	1,5 kW
Dimensions	Height Diameter	648 mm 430 mm	798 mm 430 mm
Packing	Width Depth Height	472 mm 730 mm 484 mm	472 mm 880 mm 484 mm

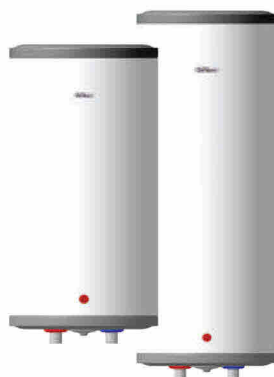


SKY CLASSIC

HORIZONTAL LOCATION OF A WATER HEATER SAVES MAXIMUM SPACE

- Automatic temperature control system
- Light indication of activation and heating temperature
- Absolute security system SPS security
- Anticorrosive magnesium anode
- Layer of insulation that significantly reduces heat and energy loss
- Safe valve
- Internal tank enameled with antibacterial glass enamel
- Very simple system of external thermoregulator control

MODEL		9W50H1	9W60H1	9W80H1
VOLUME		50 l	60 l	80 l
Heating time $\Delta t=45^{\circ}\text{C}$, no more		1,6 h	2,0h	2,5h
Power		1,5 kW	1,5kW	1,5 kW
Dimensions	Height Diameter	720 mm 360 mm	839 mm 360 mm	1030 mm 360 mm
Packing	Width Depth Height	412 mm 810 mm 424 mm	412 mm 929 mm 424 mm	412 mm 1120 mm 424 mm



TOP SMALL

SERIES COMPACT WATER HEATERS WITH AN INTERNAL TANK MADE OF HIGH QUALITY AUSTENITIC STAINLESS STEEL

- Automatic temperature control system
- Light indication of activation and heating
- Absolute security system SPS security
- Anticorrosive magnesium anode
- Layer of insulation that significantly reduces heat and energy loss
- Safety valve
- Internal tank made of stainless steel Super Strong Inox
- Compact dimensions

MODEL		2W10Vs1	2W15Vs1
VOLUME		10 l	15 l
Heating time $\Delta t=45^{\circ}\text{C}$, no more		0,4h	0,6h
Power		1,5kW	1,5 kW
Dimensions	Height	482 mm	630 mm
	Diameter	240 mm	240 mm
Packing	Width	292 mm	292 mm
	Depth	292 mm	292 mm
	Height	559 mm	707 mm



SERIES SMALL LIKE

SERIES OF WATER HEATERS OF SMALL VOLUME WITH THE LOCATION UNDER OR ABOVE A SINK

- Automatic temperature control system
- Light indication of activation and heating
- Absolute security system SPS security
- Anticorrosive magnesium anode
- Layer of insulation that significantly reduces heat and energy loss
- Safety valve
- Internal tank enameled with antibacterial glass enamel
- Very simple system of the external thermoregulator control

MODEL
VOLUME

DSZF15-LJ/10CE
10l

DSZF15-LJ/15CE
15l

Heating time
 $\Delta t=45^{\circ}\text{C}$, no more

0,4h

0,6h

Power

1,5 kW

1,5 kW

Dimensions

Width
Depth
Height

346 mm
281 mm
346 mm

386 mm
317 mm
386 mm

Packing

Width
Depth
Height

410 mm
325 mm
400 mm

450 mm
365 mm
440 mm

Number
of water
consumers



Number of point
of water consumption
sink, shower, bath



The volume
of the tank

10 - 20 l

30 - 50 l

50 - 80 l

80 - 100 l

100 - 120 l



JSC «PPO EVT named after V.A.Revunov»

Russia, 440039
Penza, Gagarina St.13
Tel: 8 800 100 86 80

www.ppoevt.ru